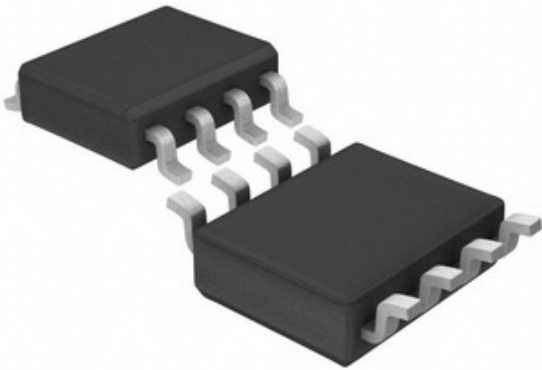




ADI (Analog Devices, Inc.)

LT1460EIS8-10#PBF

Tau Wae: LT1460EIS8-10#PBF
 Kaihanga / Waitohu: ADI (Analog Devices, Inc.)
 Whakaahuatanga hua: IC VREF SERIES 10V 8SOIC
 Ngā Rauemi: [PDF](#) LT1460EIS8-10#PBF.pdf
 RoHS Tūnga: Whakahaerehia te kore utu / RoHS
 Waehere Stock: 21852 pcs stock
 Tuhinga mai i: Hong Kong
 Te Ara Tuhi: DHL/Fedex/TNT/UPS/EMS



TONO MO TE WHAKAHUA

Ko te whakaahua he tohu. Tirohia nga korero mo nga taipitopito hua.

Ngā whakaaturanga o LT1460EIS8-10#PBF

TAU WAE	LT1460EIS8-10#PBF
KAIHANGA	ADI (Analog Devices, Inc.)
WHAKAAHUATANGA	IC VREF SERIES 10V 8SOIC
WHAKAHAERE TOKO WHAKAHAERE / ROHS TŪNGA	Whakahaerehia te kore utu / RoHS
HE RAHINGA KEI TE WĀTEA	21852 pcs
PEPA RARAUNGA	PDF LT1460EIS8-10#PBF.pdf
PUTANGA - WHAKAPUTA (MIN / WHAKATIKA)	10V
MOMOTUHI - WHAKAURU	10.9 V ~ 20 V
TE MANAWANUI	±0.125%
TE TAE TEMA	20ppm/°C
PŪRERE PŪRERE WHAKARATO	8-SOIC
RAUPAPA	-
MOMO PUKAPUKA	Series
PACKAGING	Tube
PAA / CASE	8-SOIC (0.154", 3.90mm Width)
MOMO PUTANGA	Fixed
TAE MAHI	-40°C ~ 85°C (TA)
NOISE - 10HZ KI TE 10KHZ	35µVrms
NOISE - 0.1HZ KI TE 10HZ	40µVp-p
MOMO TAE	Surface Mount
TAUMATA WHAKAARO MOE (MSL)	1 (Unlimited)
WHAKAHAERE TOKO WHAKAHAERE / ROHS TŪNGA	Lead free / RoHS Compliant
WHAKAAHUATANGA TAIPITOPITO	Series Voltage Reference IC ±0.125% 40mA 8-SOIC
I TEIE NEI - TE TUKU	360µA
NAMA - WHAKAPUTA	40mA
TAU WAE TUAKIRI	LT1460

Ngā tūtohu e hāngai ana

ADI (Analog Devices, Inc.) LT1460EIS8-10#PBF	LT1460EIS8-10#PBF Kaiwhiwhi	LT1460EIS8-10#PBF Kaiwhakarato
LT1460EIS8-10#PBF Utu	LT1460EIS8-10#PBF Pikitia	LT1460EIS8-10#PBF Whakaahua
LT1460EIS8-10#PBF PDF Datasheet	LT1460EIS8-10#PBF Download Datasheet	Tuhinga LT1460EIS8-10#PBF
LT1460EIS8-10#PBF Stock	Hokona LT1460EIS8-10#PBF	Hokona ADI (Analog Devices, Inc.) LT1460EIS8-10#PBF
ADI (Analog Devices, Inc.) LT1460EIS8-10#PBF	ADI (Analog Devices, Inc.) Kaiwhakarato	ADI (Analog Devices, Inc.) Kaiwhiwhi
ADI (Analog Devices, Inc.) LT1460EIS8-10#PBF	AD LT1460EIS8-10#PBF	ADI (Analog Devices, Inc.) LT1460EIS8-10#PBF
Analog Devices Inc. LT1460EIS8-10#PBF	Analog Devices, Inc. LT1460EIS8-10#PBF	

Ngā Hua e hāngai ana

<p>LT1460EIS8-10#TRPBF Kaihanga: ADI (Analog Devices, Inc.) Whakaahuatanga: IC VREF SERIES 10V 8SOIC I roto i te taonga: 39566 pcs</p> <p>RFQ</p>	<p>LT1460EIS8-2.5#PBF Kaihanga: ADI (Analog Devices, Inc.) Whakaahuatanga: IC VREF SERIES 2.5V 8SOIC I roto i te taonga: 18905 pcs</p> <p>RFQ</p>
<p>LT1460EIS8-5#PBF Kaihanga: ADI (Analog Devices, Inc.) Whakaahuatanga: IC VREF SERIES 5V 8SOIC I roto i te taonga: 23198 pcs</p> <p>RFQ</p>	<p>LT1460DCS8-5#PBF Kaihanga: ADI (Analog Devices, Inc.) Whakaahuatanga: IC VREF SERIES 5V 8SOIC I roto i te taonga: 24157 pcs</p> <p>RFQ</p>
<p>LT1460EIS8-5#TRPBF Kaihanga: ADI (Analog Devices, Inc.) Whakaahuatanga: IC VREF SERIES 5V 8SOIC I roto i te taonga: 36256 pcs</p> <p>RFQ</p>	<p>LT1460EIN8-2.5#PBF Kaihanga: ADI (Analog Devices, Inc.) Whakaahuatanga: IC VREF SERIES 2.5V 8DIP I roto i te taonga: 40366 pcs</p> <p>RFQ</p>
<p>LT1460EIN8-5#PBF Kaihanga: ADI (Analog Devices, Inc.) Whakaahuatanga: IC VREF SERIES 5V 8DIP I roto i te taonga: 42965 pcs</p> <p>RFQ</p>	<p>LT1460EIS8-5 Kaihanga: ADI (Analog Devices, Inc.) Whakaahuatanga: IC VREF SERIES 5V 8SOIC I roto i te taonga: 10797 pcs</p> <p>RFQ</p>
<p>LT1460EIS8-2.5#TRPBF Kaihanga: ADI (Analog Devices, Inc.) Whakaahuatanga: IC VREF SERIES 2.5V 8SOIC I roto i te taonga: 39860 pcs</p> <p>RFQ</p>	<p>LT1460DCS8-2.5#TRPBF Kaihanga: ADI (Analog Devices, Inc.) Whakaahuatanga: IC VREF SERIES 2.5V 8SOIC I roto i te taonga: 45716 pcs</p> <p>RFQ</p>
<p>LT1460EIN8-10#PBF Kaihanga: ADI (Analog Devices, Inc.) Whakaahuatanga: IC VREF SERIES 10V 8DIP I roto i te taonga: 34901 pcs</p> <p>RFQ</p>	<p>LT1460DCS8-5#TRPBF Kaihanga: ADI (Analog Devices, Inc.) Whakaahuatanga: IC VREF SERIES 5V 8SOIC I roto i te taonga: 42442 pcs</p> <p>RFQ</p>

