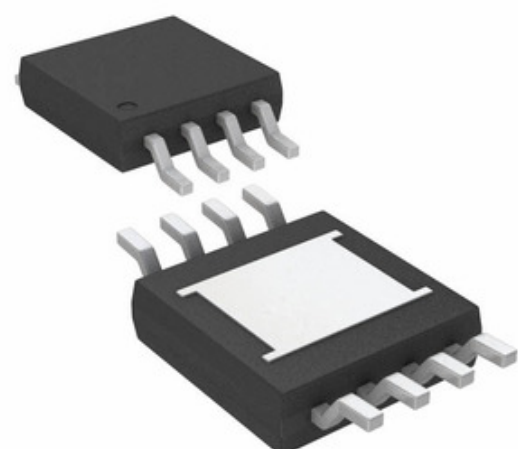




ADI (Analog Devices, Inc.)

LTC2941CMS8E#PBF

Tau Wae: LTC2941CMS8E#PBF
 Kaihanga / Waitohu: ADI (Analog Devices, Inc.)
 Whakaahuatanga hua: IC BATTERY MONITOR LI-ION 8MSOP
 Ngā Rauemi:
 1.LTC2941CMS8E#PBF.pdf
 2.LTC2941CMS8E#PBF.pdf
 3.LTC2941CMS8E#PBF.pdf
 4.LTC2941CMS8E#PBF.pdf
 RoHS Tūnga: Whakahaerehia te kore utu / RoHS
 Waehere Stock: 27842 pcs stock
 Tuhinga mai i: Hong Kong
 Te Ara Tuhi: DHL/Fedex/TNT/UPS/EMS



TONO MO TE WHAKAHUA

Ko te whakaahua he tohu. Tirohia nga korero mo nga taipitopito hua.

Ngā whakaaturanga o LTC2941CMS8E#PBF

TAU WAE	LTC2941CMS8E#PBF
KAIHANGA	ADI (Analog Devices, Inc.)
WHAKAAHUATANGA	IC BATTERY MONITOR LI-ION 8MSOP
WHAKAHAERE TOKO WHAKAHAERE / ROHS TŪNGA	Whakahaerehia te kore utu / RoHS
HE RAHINGA KEI TE WĀTEA	27842 pcs
PEPA RARAUNGA	1.LTC2941CMS8E#PBF.pdf 2.LTC2941CMS8E#PBF.pdf 3.LTC2941CMS8E#PBF.pdf 4.LTC2941CMS8E#PBF.pdf
PŪRERE PŪRERE WHAKARATO	8-MSOP-EP
RAUPAPA	-
PACKAGING	Tube
PAA / CASE	8-TSSOP, 8-MSOP (0.118", 3.00mm Width) Exposed Pad
TAE MAHI	0°C ~ 70°C (TA)
TAU O NGA PŪTAU	1
TAUMATA WHAKAARO MOE (MSL)	1 (Unlimited)
WHAKAHAERE TOKO WHAKAHAERE / ROHS TŪNGA	Lead free / RoHS Compliant
ATANGA	I ² C
MAHINGA	Battery Monitor
TIAKI WHAKAMUTUNGA	-
WHAKAAHUATANGA TAIPITOPITO	Battery Battery Monitor IC Lithium Ion 8-MSOP-EP
PŪTAIAO BATTERY	Lithium Ion
TAU WAE TUAKIRI	LTC2941

Ngā tūtohu e hāngai ana

ADI (Analog Devices, Inc.) LTC2941CMS8E#PBF	LTC2941CMS8E#PBF Kaiwhiwhi	LTC2941CMS8E#PBF Kaiwhakarato
LTC2941CMS8E#PBF Utu	LTC2941CMS8E#PBF Pikitia	LTC2941CMS8E#PBF Whakaahua
LTC2941CMS8E#PBF PDF Datasheet	LTC2941CMS8E#PBF Download Datasheet	Tuhinga LTC2941CMS8E#PBF
LTC2941CMS8E#PBF Stock	Hokona LTC2941CMS8E#PBF	Hokona ADI (Analog Devices, Inc.) LTC2941CMS8E#PBF
ADI (Analog Devices, Inc.) LTC2941CMS8E#PBF	ADI (Analog Devices, Inc.) Kaiwhakarato	ADI (Analog Devices, Inc.) Kaiwhiwhi
ADI (Analog Devices, Inc.) LTC2941CMS8E#PBF	AD LTC2941CMS8E#PBF	ADI (Analog Devices, Inc.) LTC2941CMS8E#PBF
Analog Devices Inc. LTC2941CMS8E#PBF	Analog Devices, Inc. LTC2941CMS8E#PBF	

Ngā Hua e hāngai ana

<p>LTC2941IDCB#TRPBF Kaihanga: ADI (Analog Devices, Inc.) Whakaahuatanga: IC BATTERY MONITOR LI-ION 6DFN I roto i te taonga: 43162 pcs RFQ</p>	<p>LTC2941IDCB-1#TRMPBF Kaihanga: ADI (Analog Devices, Inc.) Whakaahuatanga: IC BATTERY MONITOR LI-ION 6DFN I roto i te taonga: 42177 pcs RFQ</p>
<p>LTC2941CDCB-1#TRMPBF Kaihanga: ADI (Analog Devices, Inc.) Whakaahuatanga: IC BATTERY MONITOR LI-ION 6DFN I roto i te taonga: 46771 pcs RFQ</p>	<p>LTC2939IMS#TRPBF Kaihanga: ADI (Analog Devices, Inc.) Whakaahuatanga: IC FOUR PWR SUPP MONITOR 16MSOP I roto i te taonga: 22854 pcs RFQ</p>
<p>LTC2941CDCB#TRPBF Kaihanga: ADI (Analog Devices, Inc.) Whakaahuatanga: IC BATTERY MONITOR LI-ION 6DFN I roto i te taonga: 48222 pcs RFQ</p>	<p>LTC2941IDCB-1#TRPBF Kaihanga: ADI (Analog Devices, Inc.) Whakaahuatanga: IC BATTERY MONITOR LI-ION 6DFN I roto i te taonga: 41367 pcs RFQ</p>
<p>LTC2941CDCB-1#TRPBF Kaihanga: ADI (Analog Devices, Inc.) Whakaahuatanga: IC BATTERY MONITOR LI-ION 6DFN I roto i te taonga: 43531 pcs RFQ</p>	<p>LTC2941IMS8E#PBF Kaihanga: ADI (Analog Devices, Inc.) Whakaahuatanga: IC BATTERY MONITOR LI-ION 8MSOP I roto i te taonga: 23956 pcs RFQ</p>
<p>LTC2939IMS#PBF Kaihanga: ADI (Analog Devices, Inc.) Whakaahuatanga: IC SIX PWR SUPPLY MONITOR 16MSOP I roto i te taonga: 13030 pcs RFQ</p>	<p>LTC2941CMS8E#TRPBF Kaihanga: ADI (Analog Devices, Inc.) Whakaahuatanga: IC BATTERY MONITOR LI-ION 8MSOP I roto i te taonga: 49258 pcs RFQ</p>
<p>LTC2941CDCB#TRMPBF Kaihanga: ADI (Analog Devices, Inc.) Whakaahuatanga: IC BATTERY MONITOR LI-ION 6DFN I roto i te taonga: 49687 pcs RFQ</p>	<p>LTC2941IDCB#TRMPBF Kaihanga: ADI (Analog Devices, Inc.) Whakaahuatanga: IC BATTERY MONITOR LI-ION 6DFN I roto i te taonga: 20680 pcs RFQ</p>

