

TOSHIBA
Leading Innovation >>>

Toshiba Semiconductor and Storage

TLP352F(D4-TP4,F)

Tau Wae:

TLP352F(D4-TP4,F)

Kaihanga / Waitohu:

Toshiba Semiconductor and Storage

Whakaahuatanga hua

OPTOISO 3.75KV 1CH GATE DVR 8SMD

Ngā Rauemi:

TLP352F(D4-TP4,F).pdf

RoHS Tūnga

Whakahaerehia te kore utu / RoHS

Waehere Stock

46167 pcs stock

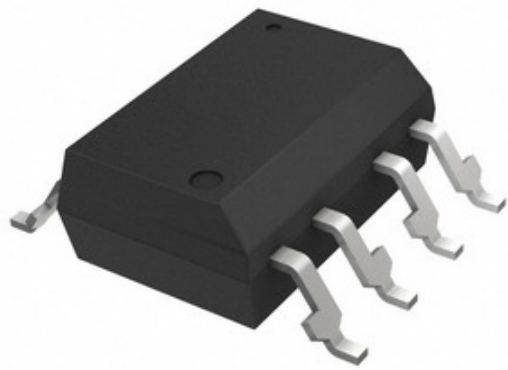
Tuhinga mai i

Hong Kong

Te Ara Tuhi

DHL/Fedex/TNT/UPS/EMS

Storage



Ko te whakaahua he tohu. Tirohia nga korero mo nga taipitopito hua.

TONO MO TE WHAKAHUA

Ngā whakaaturanga o TLP352F(D4-TP4,F)

TAU WAE	TLP352F(D4-TP4,F)
KAIHANGA	Toshiba Semiconductor and Storage
WHAKAAHUATANGA	OPTOISO 3.75KV 1CH GATE DVR 8SMD
WHAKAHAERE TOKO WHAKAHAERE / ROHS TŪNGA	Whakahaerehia te kore utu / RoHS
HE RAHINGA KEI TE WĀTEA	46167 pcs
PEPA RARAUNGA	TLP352F(D4-TP4,F).pdf
TUHINGA O MUA	15 V ~ 30 V
PUTANGA - WHAKAMOTU	3750Vrms
PUKU - WHAKAMUA (VF) (TYP)	1.55V
HANGARAU	Optical Coupling
PŪRERE PŪRERE WHAKARATO	8-SMD
RAUPAPA	-
TE WHAKATIKA / HINGA TE WĀ (TATAU)	15ns, 8ns
WHAKARITEA TE WHAKAWHĀNUI NUI (MAX)	50ns
WHAKATAKOTORANGA TANGATA TPLH / TPHL (MAX)	200ns, 200ns
PACKAGING	Original-Reel®
PAA / CASE	8-SMD, Gull Wing
ĒTAHI INGOA	TLP352F(D4-TP4F)DKR
TAE MAHI	-40°C ~ 125°C
TE MAHA O NGA POUAKA	1
MOMO TAE	Surface Mount
TAUMATA WHAKAARO MOE (MSL)	1 (Unlimited)
WHAKAHAERE TOKO WHAKAHAERE / ROHS TŪNGA	Lead free / RoHS Compliant
WHAKAAHUATANGA TAIPITOPITO	2.5A Gate Driver Optical Coupling 3750Vrms 1 Channel 8-SMD
I TEIE NEI - WHAKAPUTANGA WHAKAEKE	2.5A
I TEIE NEI - TE WHAKAPUTA RAWA, RAWA	2A, 2A
I TEIE NEI - DC WHAKAMUA (KI) (MAX)	20mA
ARATAU TAE MAEATANGA MAAMA (MIN)	20kV/μs
WHAKAAETANGA	CSA, cUL, UL, VDE

Ngā tūtohu e hāngai ana

Toshiba Semiconductor and Storage TLP352F(D4-TP4,F)	TLP352F(D4-TP4,F) Kaiwhiwhi	TLP352F(D4-TP4,F) Kaiwhakarato
TLP352F(D4-TP4,F) Utu	TLP352F(D4-TP4,F) Pikitia	TLP352F(D4-TP4,F) Whakaahua
TLP352F(D4-TP4,F) PDF Datasheet	TLP352F(D4-TP4,F) Download Datasheet	Tuhinga TLP352F(D4-TP4,F)
TLP352F(D4-TP4,F) Stock	Hokona TLP352F(D4-TP4,F)	Hokona Toshiba Semiconductor and Storage TLP352F(D4-TP4,F)
Toshiba Semiconductor and Storage TLP352F(D4-TP4,F)	Toshiba Semiconductor and Storage Kaiwhakarato	Toshiba Semiconductor and Storage Kaiwhiwhi
Toshiba Semiconductor and Storage TLP352F(D4-TP4,F)	Toshiba TLP352F(D4-TP4,F)	

Ngā Hua e hāngai ana

<p>TLP3544(F) Kaihanga: Toshiba Semiconductor and Storage Whakaahuatanga: SSR RELAY SPST-NO 3.5A 0-40V I roto i te taonga: 24874 pcs</p> <p>RFQ</p>	<p>TLP3543A(F) Kaihanga: Toshiba Semiconductor and Storage Whakaahuatanga: SSR RELAY SPST-NO 5A 0-30V I roto i te taonga: 28619 pcs</p> <p>RFQ</p>
<p>TLP352F(TP4,F) Kaihanga: Toshiba Semiconductor and Storage Whakaahuatanga: X36 PB-F PHOTOCOUPLER SMD GULL W I roto i te taonga: 124898 pcs</p> <p>RFQ</p>	<p>TLP352(F) Kaihanga: Toshiba Semiconductor and Storage Whakaahuatanga: OPTOISO 3.75KV 1CH GATE DVR 8DIP I roto i te taonga: 28619 pcs</p> <p>RFQ</p>
<p>TLP352(D4,F) Kaihanga: Toshiba Semiconductor and Storage Whakaahuatanga: OPTOISO 3.75KV 1CH GATE DVR 8DIP I roto i te taonga: 39385 pcs</p> <p>RFQ</p>	<p>TLP352(LF1,F) Kaihanga: Toshiba Semiconductor and Storage Whakaahuatanga: OPTOISO 3.75KV 1CH GATE DVR 8SMD I roto i te taonga: 41269 pcs</p> <p>RFQ</p>
<p>TLP3542(F) Kaihanga: Toshiba Semiconductor and Storage Whakaahuatanga: SSR RELAY SPST-NO 2.5A 0-60V I roto i te taonga: 35748 pcs</p> <p>RFQ</p>	<p>TLP352F(D4,F) Kaihanga: Toshiba Semiconductor and Storage Whakaahuatanga: OPTOISO 3.75KV 1CH GATE DVR 8DIP I roto i te taonga: 51143 pcs</p> <p>RFQ</p>
<p>TLP3543A(TP1,F) Kaihanga: Toshiba Semiconductor and Storage Whakaahuatanga: SSR RELAY SPST-NO 5A 0-30V I roto i te taonga: 48433 pcs</p> <p>RFQ</p>	<p>TLP352(D4-TP1,F) Kaihanga: Toshiba Semiconductor and Storage Whakaahuatanga: OPTOISO 3.75KV 1CH GATE DVR 8SMD I roto i te taonga: 115046 pcs</p> <p>RFQ</p>
<p>TLP3543(F) Kaihanga: Toshiba Semiconductor and Storage Whakaahuatanga: SSR RELAY SPST-NO 4A 0-20V I roto i te taonga: 18719 pcs</p> <p>RFQ</p>	<p>TLP352(TP1,F) Kaihanga: Toshiba Semiconductor and Storage Whakaahuatanga: OPTOISO 3.75KV 1CH GATE DVR 8SMD I roto i te taonga: 122055 pcs</p> <p>RFQ</p>