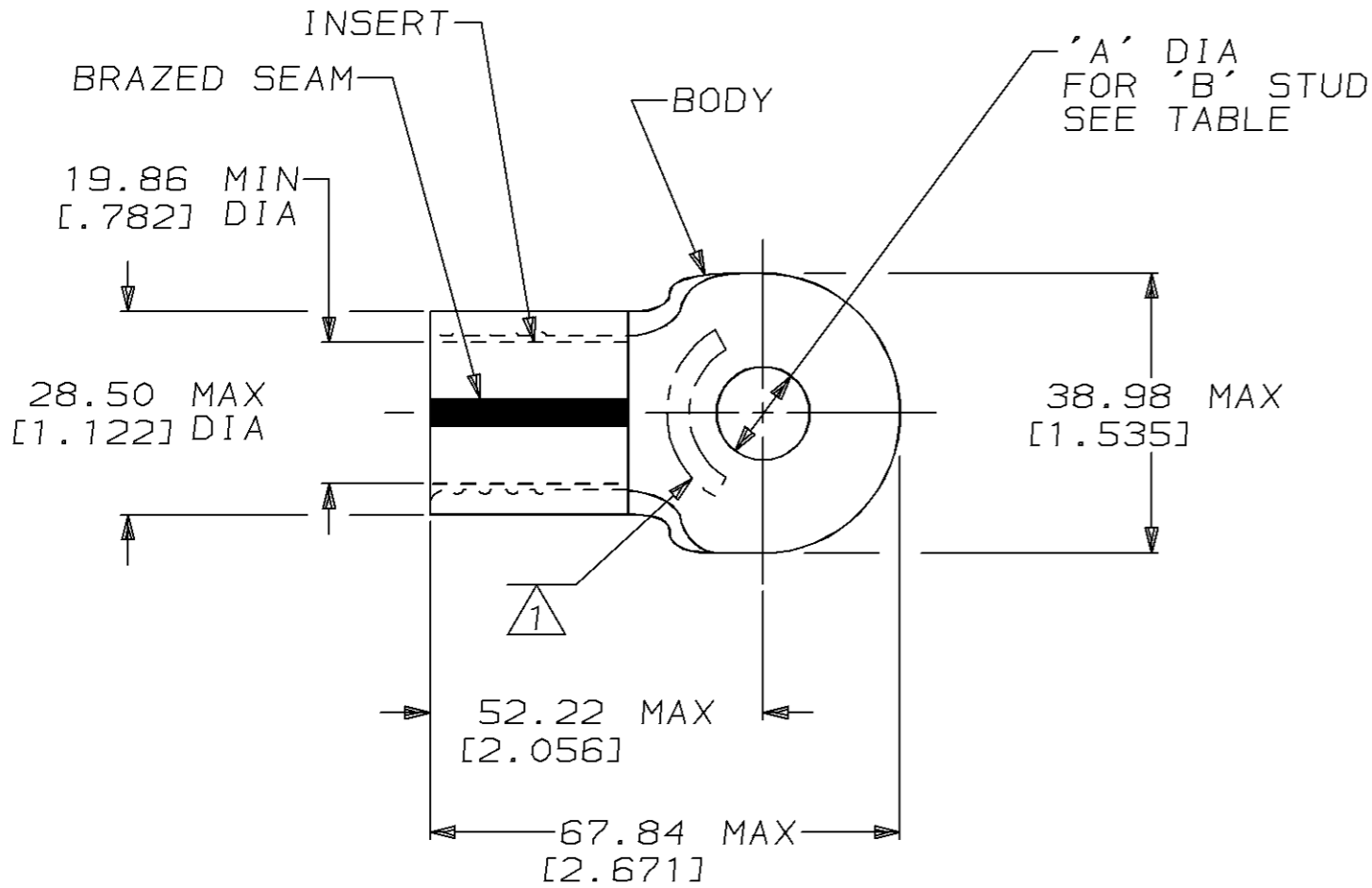


THIS DRAWING IS UNPUBLISHED. RELEASED FOR PUBLICATION, 19 .
 © COPYRIGHT 19 BY AMP INCORPORATED. ALL INTERNATIONAL RIGHTS RESERVED.

LOC	DIST	P	F	ZONE	LTR	REVISIONS	DATE	APPD
G	86				F	REVISED & REDRAWN PER 0720-0041-93	6/23/93	OKS AJK



OBSOLETE	'A'	'B'	MATERIAL	PART NO
16.66 [.656]	5/8		BODY: COPPER PER ASTM B-152 TIN PL 0.00254 [.000100] MIN THK PER MIL-T-10727	52558-5
13.08 [.515]	1/2			52558-4
OBSOLETE 11.51 [.453]	7/16		INSERT: BRASS PER MIL-C-50 TIN PL 0.00254 [.000100] MIN THK PER MIL-T-10727	52558-3
OBSOLETE 9.91 [.390]	3/8			52558-2
OBSOLETE 8.33 [.328]	5/16			52558-1
OBSOLETE 6.73 [.265]	1/4			52558

AMP INCORPORATED CUSTOMER SERVICE SYSTEMS		MAX RECOMMENDED OPERATING TEMPERATURE: 170°C MAX		DO NOT SCALE PRINT. UNLESS SPECIFIED DIMENSIONS IN mm [INCHES] TOLERANCES ON: 2 PLC DEC ± 0.20 [.008] 3 PLC DEC ± - ANGLES ± -		DR 6/23/93 DK SCHRUM		AMP Incorporated Harrisburg, PA 17105-3608	
FOR ADDITIONAL PRODUCT INFORMATION OR COPIES OF DRAWINGS AND TECHNICAL DOCUMENTS		VOLTAGE RATING: NOT APPLICABLE		MATERIAL COPPER PER ASTM B-152 ANNEALED		CHK 7/1/93 AJ KAUFMAN			
FOR APPLICATION TOOLING INFORMATION		TOOLING ASSISTANCE CENTER 1-800-722-1111		WIRE CROSS SECTIONAL AREA RANGE: 0.139-0.190mm² [275-375] MCM SOLID OR STRANDED		APPD 7/1/93 RE ROSER		SIZE B	
FOR ORDER ENTRY		1-800-526-5142		THIS DRAWING IS A CONTROLLED DOCUMENT FOR AMP INCORPORATED. IT IS SUBJECT TO CHANGE AND THE CONTROLLING ENGINEERING ORGANIZATION SHOULD BE CONTACTED FOR THE LATEST REVISION.		APPD 7/1/93 JL MECKLEY		CAGE CODE 00779	
						PRODUCT SPEC -		DRAWING NO C-52558	
						APPLICATION SPEC -		SCALE 1:1	
						WEIGHT -		SHEET 1 OF 1	