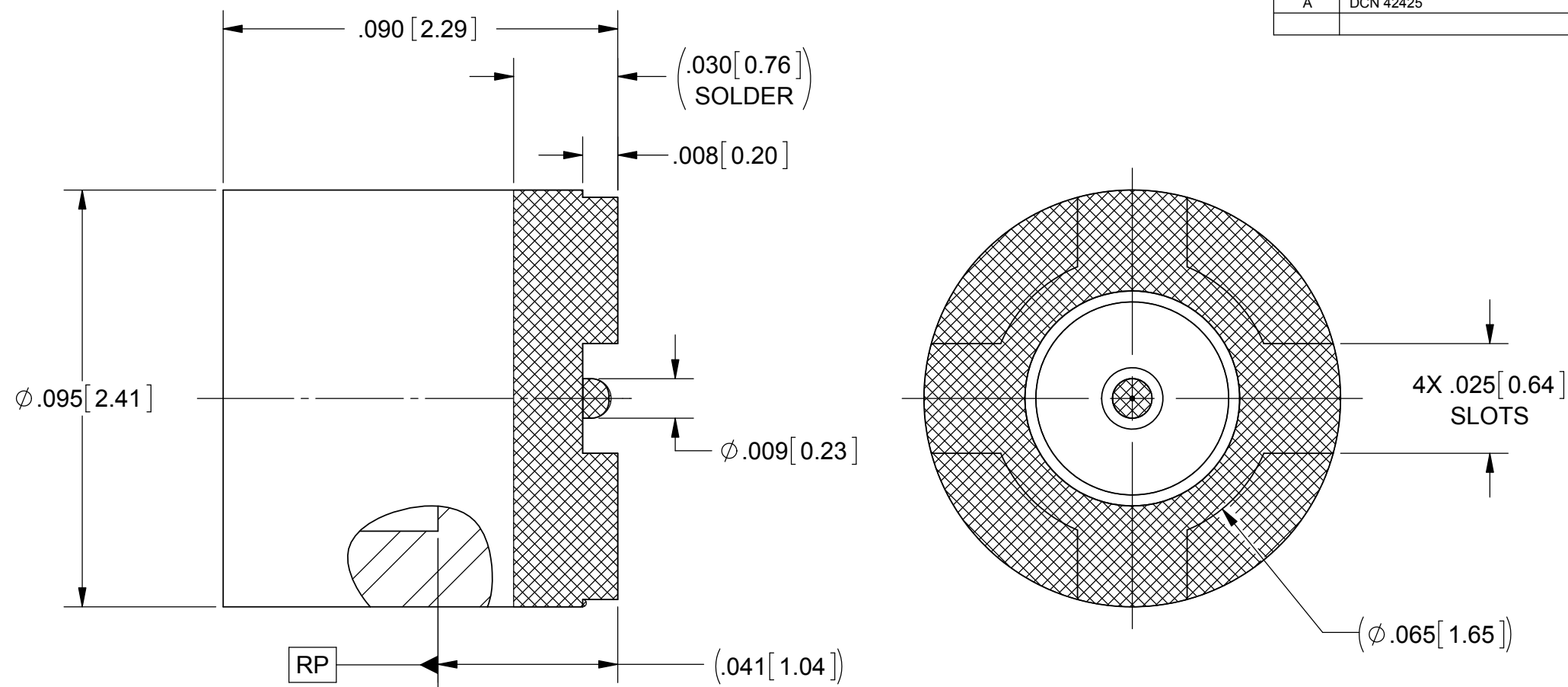
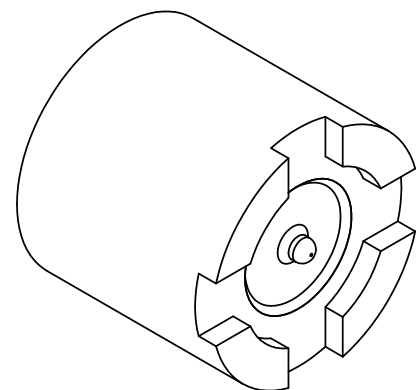
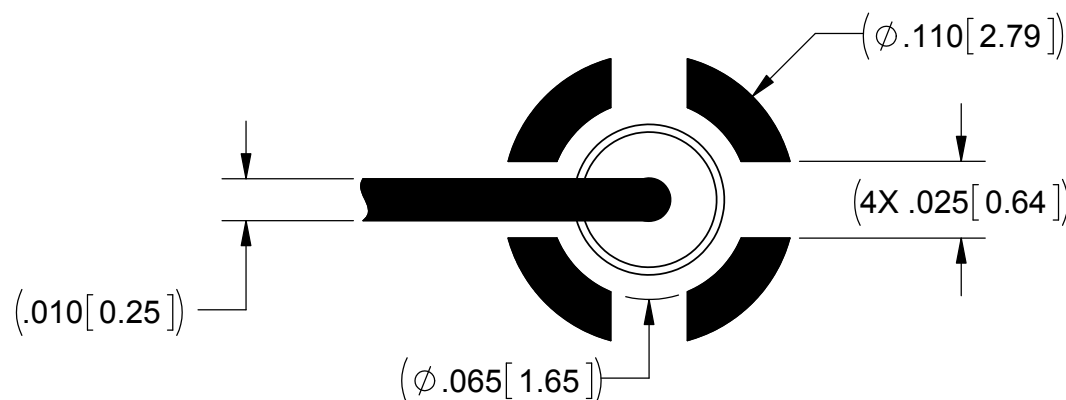


# PRODUCT DATA DRAWING

| REVISION HISTORY |             |       |          |
|------------------|-------------|-------|----------|
| REV              | DESCRIPTION | DATE  | APPROVED |
| -                | DCN 42353   | 05/16 | DAL      |
| A                | DCN 42425   | 06/16 | STW      |



**MATERIAL:**  
**BODY:** STAINLESS STEEL PER AMS-5640, ALLOY UNS S30300, TYPE 1  
**PIN:** KOVAR PER ASTM-F15  
**GLASS:** CORNING 7070 OR EQUIVALENT  
**FINISH:**  
**BODY & PIN:** GOLD PER ASTM B488, TYPE II, CODE C, CLASS 1.27, OVER NICKEL PER AMS-QQ-N-290, CLASS 1, .00005" MIN.



**PERFORMANCE:**  
**IMPEDANCE:** 50 OHMS.  
**OPERATING TEMP.:** -55 °C TO +125 °C.

| SV P/N     | INTERFACE   |
|------------|-------------|
| 3811-60005 | SMOOTH BORE |
| 3811-60006 | FULL DETENT |

|  |   |   |  |
|--|---|---|--|
| MATERIAL: SEE NOTES  | DIMENSIONS ARE IN INCHES TOLERANCES:<br>FRACTIONAL: $\pm 1/64$ ANGULAR: X° $\pm 1'0''$<br>X°X' $\pm 15''$ | UNLESS OTHERWISE SPECIFIED<br>1) ALL DIMENSIONS ARE IN INCHES (MILLIMETERS)<br>2) ALL DIMENSIONS ARE AFTER PLATING.<br>3) BREAK CORNERS & EDGES .005 R. MAX.<br>4) CHAM. 1ST & LAST THREADS.<br>5) SURFACE ROUGHNESS 63-MIL-STD-10.<br>6) DIA.'S ON COMMON CENTERS TO BE CONCENTRIC WITHIN .005 T.I.R.<br>7) REMOVE ALL BURRS | <b>SV Microwave, Inc.</b><br>2400 Centrepark West Drive, Suite 100<br>West Palm Beach, FL 33409<br>TITLE: <b>SMPS MALE SURFACE MOUNT</b> |
| FINISH: SEE NOTES  | DECIMAL: X $\pm .030$<br>.XX $\pm .010$<br>.XXX $\pm .005$  |   |  |
| SURFACE AREA: N/A  | INTERPRET DIMENSIONS AND TOLERANCES PER ASME Y14.5M - 1994  | DRAWN: ELA 05/19/16   | SIZE: B  |
| <b>PROPRIETARY</b><br>THE INFORMATION CONTAINED IN THIS DRAWING IS THE SOLE PROPERTY OF SV MICROWAVE, INC. ANY REPRODUCTION IN PART OR AS A WHOLE WITHOUT THE WRITTEN PERMISSION OF SV MICROWAVE, INC IS PROHIBITED. | THIRD ANGLE PROJECTION  | CHECKED: DAL 05/19/16   | CAGE CODE: 95077   |
|  |   | APPROVED: DAL 05/19/16  | DWG. NO. 3811-60005-60006-TD   |
|  |   |   | SCALE: 30:1  |
|  |   |   | SHEET 1 OF 1   |