

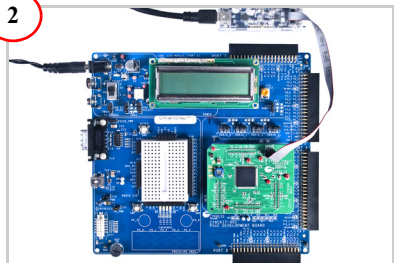
1



### Install Software

1. Insert the kit DVD.
2. Install PSOC Creator, PSOC Programmer, and the kit project software.

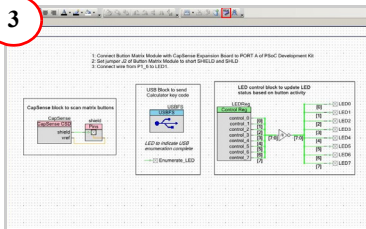
2



### Board Setup for PSoC Development Kit

1. Install the CY8C38 Family Processor Module on the PSoC Development Kit.
2. Connect MiniProg3 to the CY8C38 Family Processor Module.
3. Ensure default settings are configured and power the PSoC Development Kit.

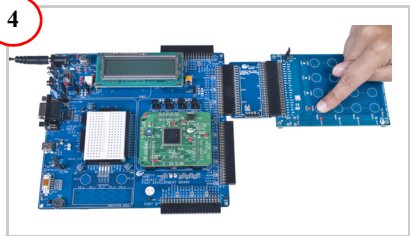
3



### Program the PSoC Device

1. Open **BMM\_USB\_KIT-001** code example from the PSOC Creator start page.
2. Click the Program icon in PSOC Creator to program the board.
3. Unplug MiniProg3 and disconnect power from the board.
4. Connect a jumper wire from P1[6] to LED1.
5. Connect a USB cable from the USB connector J9 to your PC.

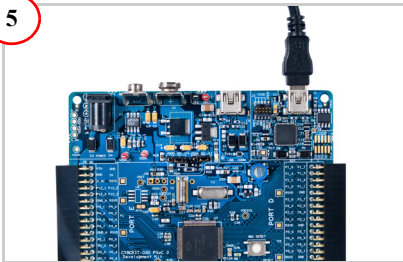
4



### Test PSoC CapSense Expansion Board Kit

1. Connect J1 of PSoC CapSense Expansion Board kit to Port A of PSoC Development Kit; connect J2 to Matrix Button Module Kit.
2. Power the PSoC Development Kit and wait for USB Enumeration LED, LED1 to turn on. Refer to UG in install location <Install\_Directory>\PSoC CapSense EBK<version>\Documentation for more details
3. Touch a button; the corresponding row and column LEDs turn on.

5

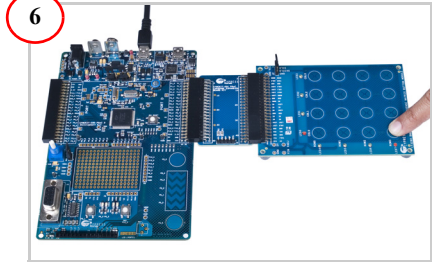


### Programming with PSOC 3 Development Kit

1. Plug the USB cable into your PC and to J1 of the PSOC 3 Development Kit.
2. Open **BMM\_USB\_KIT-030** code example from the PSOC Creator start page.
3. Click the Program icon in PSOC Creator to program the board.
4. Unplug the USB cable to disconnect power from the board.

**Note:** Connect jumper J2 on the Matrix Button Module board to SHLD.

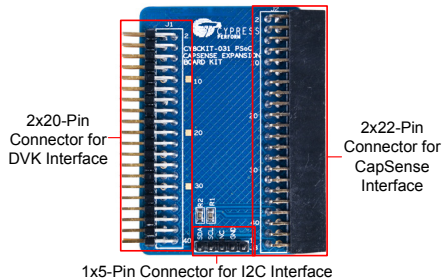
6



### Test PSOC CapSense EBK with PSOC 3 DVK

1. Connect J1 of the PSOC CapSense Expansion Board Kit to Port D of the PSOC 3 Development Kit; connect J2 to the Matrix Button Module Kit. Remove the LCD from the development kit to avoid parasitic capacitance.
2. Connect the USB cable to J2 of the PSOC 3 Development Kit and wait for USB Enumeration LED, LED4 to turn on. Refer to UG mentioned in step 4 for more details.
3. Touch a button; the corresponding row and column LEDs turn on.

## CY8CKIT-031 Hardware Overview and Features



For the latest information about this kit, visit  
<http://www.cypress.com/go/CY8CKIT-031>

