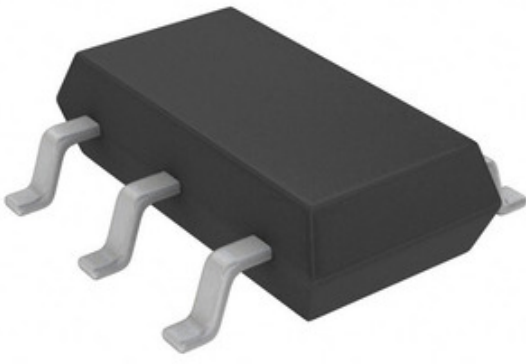




ADI (Analog Devices, Inc.)

LT3467AIS6#TRMPBF

Tau Wae: LT3467AIS6#TRMPBF
 Kaihanga / Waitohu: ADI (Analog Devices, Inc.)
 Whakaahuatanga hua: IC REG MULT CONFIG ADJ TSOT23
 Ngā Rauemi: LT3467AIS6#TRMPBF.pdf
 RoHS Tūnga: Whakahaerehia te kore utu / RoHS
 Waehere Stock: 38776 pcs stock
 Tuhinga mai i: Hong Kong
 Te Ara Tuhi: DHL/Fedex/TNT/UPS/EMS



TONO MO TE WHAKAHUA

Ko te whakaahua he tohu. Tirohia nga korero mo nga taipitopito hua.

Ngā whakaaturanga o LT3467AIS6#TRMPBF

TAU WAE	LT3467AIS6#TRMPBF
KAIHANGA	ADI (Analog Devices, Inc.)
WHAKAAHUATANGA	IC REG MULT CONFIG ADJ TSOT23
WHAKAHAERE TOKO WHAKAHAERE / ROHS TŪNGA	Whakahaerehia te kore utu / RoHS
HE RAHINGA KEI TE WĀTEA	38776 pcs
PEPA RARAUNGA	LT3467AIS6#TRMPBF.pdf
PUTANGA - WHAKAPUTA (MIN / WHAKATIKA)	1.255V
PUTANGA - WHAKAPUTA (MAX)	40V
MOMOTUHI - INPUT (MIN)	2.4V
NGAOHIHI - WHAKAURU (MAX)	16V
TOPOLOGY	Boost, Flyback, SEPIC
KAIWHAKAHAERE TUKUTAHI	No
PŪRERE PŪRERE WHAKARATO	TSOT-23-6
RAUPAPA	-
PACKAGING	Tape & Reel (TR)
PAA / CASE	SOT-23-6 Thin, TSOT-23-6
MOMO PUTANGA	Adjustable
WHIRIHORANGA WHAKAPUTA	Positive
ĒTAHI INGOA	LT3467AIS6#TRMPBF-ND LT3467AIS6#TRMPBFTR
TAE MAHI	-40°C ~ 125°C (TJ)
TAU O NGA HUA	1
MOMO TAE	Surface Mount
TAUMATA WHAKAARO MOE (MSL)	1 (Unlimited)
WHAKAHAERE TOKO WHAKAHAERE / ROHS TŪNGA	Lead free / RoHS Compliant
MAHINGA	Step-Up, Step-Up/Step-Down
RAUTANGA - WHAKAWHITI	2.1MHz
WHAKAAHUATANGA TAIPITOPITO	Boost, Flyback, SEPIC Switching Regulator IC Positive Adjustable 1.255V 1 Output 1.1A SOT-23-6 Thin, TSOT-23-6
NAMA - WHAKAPUTA	1.1A
TAU WAE TUAKIRI	LT3467

Ngā tūtohu e hāngai ana

ADI (Analog Devices, Inc.) LT3467AIS6#TRMPBF	LT3467AIS6#TRMPBF Kaiwhiwhi	LT3467AIS6#TRMPBF Kaiwhakarato
LT3467AIS6#TRMPBF Utu	LT3467AIS6#TRMPBF Pikitia	LT3467AIS6#TRMPBF Whakaahua
LT3467AIS6#TRMPBF PDF Datasheet	LT3467AIS6#TRMPBF Download Datasheet	Tuhinga LT3467AIS6#TRMPBF
LT3467AIS6#TRMPBF Stock	Hokona LT3467AIS6#TRMPBF	Hokona ADI (Analog Devices, Inc.) LT3467AIS6#TRMPBF
ADI (Analog Devices, Inc.) LT3467AIS6#TRMPBF	ADI (Analog Devices, Inc.) Kaiwhakarato	ADI (Analog Devices, Inc.) Kaiwhiwhi
ADI (Analog Devices, Inc.) LT3467AIS6#TRMPBF	AD LT3467AIS6#TRMPBF	ADI (Analog Devices, Inc.) LT3467AIS6#TRMPBF
Analog Devices Inc. LT3467AIS6#TRMPBF	Analog Devices, Inc. LT3467AIS6#TRMPBF	

Ngā Hua e hāngai ana

<p>LT3467AES6#TRMPBF Kaihanga: ADI (Analog Devices, Inc.) Whakaahuatanga: IC REG MULT CONFIG ADJ TSOT23 I roto i te taonga: 23769 pcs</p> <p>RFQ</p>	<p>LT3467AIS6#TRPBF Kaihanga: ADI (Analog Devices, Inc.) Whakaahuatanga: IC REG MULT CONFIG ADJ TSOT23 I roto i te taonga: 36660 pcs</p> <p>RFQ</p>
<p>LT3467ES6#TRMPBF Kaihanga: ADI (Analog Devices, Inc.) Whakaahuatanga: IC REG MULT CONFIG ADJ 1.1A SOT23 I roto i te taonga: 37729 pcs</p> <p>RFQ</p>	<p>LT3467ES6#TRPBF Kaihanga: ADI (Analog Devices, Inc.) Whakaahuatanga: IC REG MULT CONFIG ADJ 1.1A SOT23 I roto i te taonga: 50035 pcs</p> <p>RFQ</p>
<p>LT3467EDDB#TRPBF Kaihanga: ADI (Analog Devices, Inc.) Whakaahuatanga: IC REG MULT CONFIG ADJ 1.1A 8DFN I roto i te taonga: 45481 pcs</p> <p>RFQ</p>	<p>LT3467EDDB#TRMPBF Kaihanga: ADI (Analog Devices, Inc.) Whakaahuatanga: IC REG MULT CONFIG ADJ 1.1A 8DFN I roto i te taonga: 38555 pcs</p> <p>RFQ</p>
<p>LT3467AIDDB#TRPBF Kaihanga: ADI (Analog Devices, Inc.) Whakaahuatanga: IC REG MULT CONFIG ADJ 1.1A 8DFN I roto i te taonga: 36988 pcs</p> <p>RFQ</p>	<p>LT3467AEDDB#TRPBF Kaihanga: ADI (Analog Devices, Inc.) Whakaahuatanga: IC REG MULT CONFIG ADJ 1.1A 8DFN I roto i te taonga: 44445 pcs</p> <p>RFQ</p>
<p>LT3467AIDDB#TRMPBF Kaihanga: ADI (Analog Devices, Inc.) Whakaahuatanga: IC REG MULT CONFIG ADJ 1.1A 8DFN I roto i te taonga: 42452 pcs</p> <p>RFQ</p>	<p>LT3467AES6#TRPBF Kaihanga: ADI (Analog Devices, Inc.) Whakaahuatanga: IC REG MULT CONFIG ADJ TSOT23 I roto i te taonga: 49277 pcs</p> <p>RFQ</p>
<p>LT3467EDDB Kaihanga: ADI (Analog Devices, Inc.) Whakaahuatanga: IC REGULATOR I roto i te taonga: 3168 pcs</p> <p>RFQ</p>	<p>LT3467AIDDB Kaihanga: ADI (Analog Devices, Inc.) Whakaahuatanga: IC REGULATOR I roto i te taonga: 5343 pcs</p> <p>RFQ</p>