

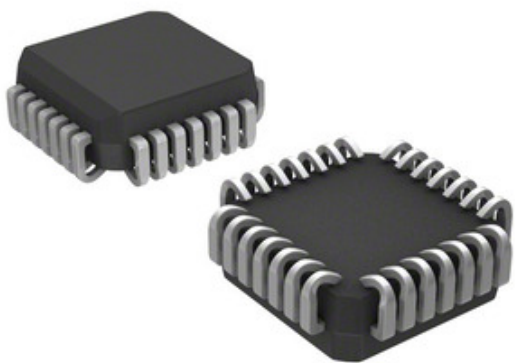
ON Semiconductor AMI Semiconductor / ON

## MC10E111FNG

Tau Wae:  
 Kaihanga / Waitohu:  
 Whakaahuatanga hua  
 Ngā Rauemi:  
 RoHS Tūnga  
 Waehere Stock  
 Tuhiinga mai i  
 Te Ara Tuhi

MC10E111FNG  
 AMI Semiconductor / ON Semiconductor  
 IC CLK BUFFER 1:9 800MHZ 28PLCC  
 MC10E111FNG.pdf  
 Whakahaerehia te kore utu / RoHS  
 10182 pcs stock  
 Hong Kong  
 DHL/Fedex/TNT/UPS/EMS

### Semiconductor



Ko te whakaahua he tohu. Tirohia nga korero mo nga taipitopito hua.

**TONO MO TE WHAKAHUA**

### Ngā whakaaturanga o MC10E111FNG

TAU WAE	MC10E111FNG
KAIHANGA	AMI Semiconductor / ON Semiconductor
WHAKAAHUATANGA	IC CLK BUFFER 1:9 800MHZ 28PLCC
WHAKAHAERE TOKO WHAKAHAERE / ROHS TŪNGA	Whakahaerehia te kore utu / RoHS
HE RAHINGA KEI TE WĀTEA	10182 pcs
PEPA RARAUNGA	MC10E111FNG.pdf
TUHINGA O MUA	4.2 V ~ 5.7 V
MOMO	Fanout Buffer (Distribution)
PŪRERE PŪRERE WHAKARATO	28-PLCC (11.51x11.51)
RAUPAPA	10E
RATONGA - WHAKAURU: WHAKAPUTA	1:9
PACKAGING	Tube
PAA / CASE	28-LCC (J-Lead)
WHAKAPUTA	ECL, PECL
ĒTAHI INGOA	MC10E111FNGOS
TAE MAHI	-40°C ~ 85°C
TUHINGA O MUA	1
MOMO TAE	Surface Mount
TAUMATA WHAKAARO MOE (MSL)	3 (168 Hours)
WHAKAHAERE TOKO WHAKAHAERE / ROHS TŪNGA	Lead free / RoHS Compliant
WHAKAURU	ECL, PECL
TAUTANGA - MAX	800MHz
MOTUHAKE - WHAKAURU: WHAKAPUTA	Yes/Yes
WHAKAAHUATANGA TAIPITOPITO	Clock Fanout Buffer (Distribution) IC 1:9 800MHz 28-LCC (J-Lead)
TAU WAE TUAKIRI	MC10E111

### Ngā tūtohu e hāngai ana

AMI Semiconductor / ON Semiconductor MC10E111FNG	MC10E111FNG Kaiwhiwhi	MC10E111FNG Kaiwhakarato
MC10E111FNG Utu	MC10E111FNG Pikitia	MC10E111FNG Whakaahua
MC10E111FNG PDF Datasheet	MC10E111FNG Download Datasheet	Tuhinga MC10E111FNG
MC10E111FNG Stock	Hokona MC10E111FNG	Hokona AMI Semiconductor / ON Semiconductor MC10E111FNG
AMI Semiconductor / ON Semiconductor MC10E111FNG	AMI Semiconductor / ON Semiconductor Kaiwhakarato	AMI Semiconductor / ON Semiconductor Kaiwhiwhi
AMI Semiconductor / ON Semiconductor MC10E111FNG	ON Semiconductor MC10E111FNG	Aptina / ON Semiconductor MC10E111FNG
Catalyst Semiconductor / ON Semiconductor MC10E111FNG	PulseCore Semiconductor / ON Semiconductor MC10E111FNG	Sanyo Semiconductor / ON Semiconductor MC10E111FNG

### Ngā Hua e hāngai ana

<p><b>MC10E111FNR2G</b>                  Kaihanga: AMI Semiconductor / ON Semiconductor                  Whakaahuatanga: IC CLK BUFFER 1:9 800MHZ 28PLCC                  I roto i te taonga: 14121 pcs</p> <p><b>RFQ</b></p>	<p><b>MC10E112FN</b>                  Kaihanga: AMI Semiconductor / ON Semiconductor                  Whakaahuatanga: IC DRIVER QUAD ECL N-INV 28PLCC                  I roto i te taonga: 4644 pcs</p> <p><b>RFQ</b></p>
<p><b>MC10E112FNG</b>                  Kaihanga: AMI Semiconductor / ON Semiconductor                  Whakaahuatanga: IC DRIVER QUAD ECL N-INV 28PLCC                  I roto i te taonga: 5191 pcs</p> <p><b>RFQ</b></p>	<p><b>MC10E111SFNR2</b>                  Kaihanga: AMI Semiconductor / ON Semiconductor                  Whakaahuatanga: IC CLK BUFFER 1:9 800MHZ 28PLCC                  I roto i te taonga: 4208 pcs</p> <p><b>RFQ</b></p>
<p><b>MC10E111FN</b>                  Kaihanga: AMI Semiconductor / ON Semiconductor                  Whakaahuatanga: IC CLK BUFFER 1:9 800MHZ 28PLCC                  I roto i te taonga: 3569 pcs</p> <p><b>RFQ</b></p>	<p><b>MC10E107FNG</b>                  Kaihanga: AMI Semiconductor / ON Semiconductor                  Whakaahuatanga: IC GATE XOR/XNOR QUINT 28-PLCC                  I roto i te taonga: 3298 pcs</p> <p><b>RFQ</b></p>
<p><b>MC10E107FNR2G</b>                  Kaihanga: AMI Semiconductor / ON Semiconductor                  Whakaahuatanga: IC GATE XOR/XNOR QUINT 28-PLCC                  I roto i te taonga: 3081 pcs</p> <p><b>RFQ</b></p>	<p><b>MC10E111SFN</b>                  Kaihanga: AMI Semiconductor / ON Semiconductor                  Whakaahuatanga: IC CLK BUFFER 1:9 800MHZ 28PLCC                  I roto i te taonga: 3131 pcs</p> <p><b>RFQ</b></p>
<p><b>MC10E107FN</b>                  Kaihanga: AMI Semiconductor / ON Semiconductor                  Whakaahuatanga: IC GATE XOR/XNOR QUINT 28-PLCC                  I roto i te taonga: 6434 pcs</p> <p><b>RFQ</b></p>	<p><b>MC10E107FNR2</b>                  Kaihanga: AMI Semiconductor / ON Semiconductor                  Whakaahuatanga: IC GATE XOR/XNOR QUINT 28-PLCC                  I roto i te taonga: 5529 pcs</p> <p><b>RFQ</b></p>
<p><b>MC10E111FNR2</b>                  Kaihanga: AMI Semiconductor / ON Semiconductor                  Whakaahuatanga: IC CLK BUFFER 1:9 800MHZ 28PLCC                  I roto i te taonga: 5067 pcs</p> <p><b>RFQ</b></p>	<p><b>MC10E104FNR2G</b>                  Kaihanga: AMI Semiconductor / ON Semiconductor                  Whakaahuatanga: IC GATE AND/NAND QD 2INP 28-PLCC                  I roto i te taonga: 13471 pcs</p> <p><b>RFQ</b></p>