

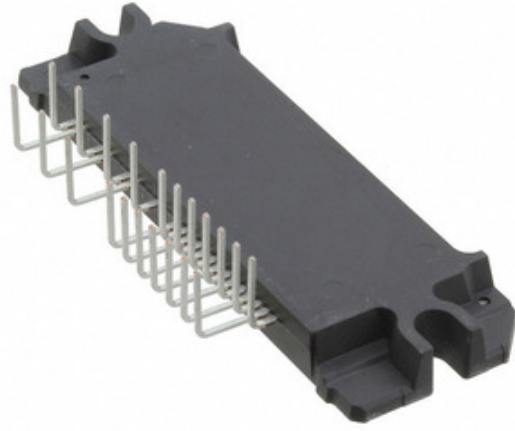


ON Semiconductor

## STK554U392A-E

Tau Wae:  
 Kaihanga / Waitohu:  
 Whakaahuatanga hua  
 Ngā Rauemi:  
 RoHS Tūnga  
 Waehe Stock  
 Tuhinga mai i  
 Te Ara Tuhi

STK554U392A-E  
 Ault / SL Power  
 IC BRIDGE DRIVER PAR 29SIP  
 STK554U392A-E.pdf  
 Whakahaerehia te kore utu / RoHS  
 6790 pcs stock  
 Hong Kong  
 DHL/Fedex/TNT/UPS/EMS



**TONO MO TE WHAKAHUA**

Ko te whakaahua he tohu. Tirohia nga korero mo nga taipitopito hua.

### Ngā whakaaturanga o STK554U392A-E

TAU WAE	STK554U392A-E
KAIHANGA	ON Semiconductor
WHAKAAHUATANGA	IC BRIDGE DRIVER PAR 29SIP
WHAKAHAERE TOKO WHAKAHAERE / ROHS TŪNGA	Whakahaerehia te kore utu / RoHS
HE RAHINGA KEI TE WĀTEA	6790 pcs
PEPA RARAUNGA	STK554U392A-E.pdf
NGAOHIHI - TAE	-
PUPUHI - PUTA PUTA (VGT) (MAX)	30A
TUHINGA O MUA - BREAKDOWN	21-SIP
HANGARAU	IGBT
AHUA TAE	12.5 V ~ 17.5 V
RAUPAPA	-
ROHS TŪNGA	Bulk
RIPA TAE - RAATAU RAWA	AC Motors
ROTO I (TONO)	Inductive
KO TE POARI	29-SSIP Module, 21 Leads, Formed Leads
ĒTAHI INGOA	STK554U392A-EOS
TAE MAHI	-40°C ~ 150°C (TJ)
MOMO TAE	Through Hole
TAUMATA WHAKAARO MOE (MSL)	1 (Unlimited)
WAEHANGA KAIHANGA	STK554U392A-E
ATANGA	Logic
NGĀ ĀHUATANGA	Bootstrap Circuit, Status Flag
WHAKAAHUA NUI	Half Bridge (3) Driver AC Motors IGBT 21-SIP
WHAKAHAERE WHIRIHORANGA	450V (Max)
WHAKAAHUATANGA	IC BRIDGE DRIVER PAR 29SIP
NGĀ ĀHUATANGA MANA	Current Limiting, Shoot-Through, UVLO
WHAKAPĀ ATU @ WHAKAOHO	Half Bridge (3)
HE RAUPAPA IA IC	15A

### Ngā tūtohu e hāngai ana

Ault / SL Power STK554U392A-E	STK554U392A-E Kaiwhiwhi	STK554U392A-E Kaiwhakarato
STK554U392A-E Utu	STK554U392A-E Pikitia	STK554U392A-E Whakaahua
STK554U392A-E PDF Datasheet	STK554U392A-E Download Datasheet	Tuhinga STK554U392A-E
STK554U392A-E Stock	Hokona STK554U392A-E	Hokona Ault / SL Power STK554U392A-E
Ault / SL Power STK554U392A-E	Ault / SL Power Kaiwhakarato	Ault / SL Power Kaiwhiwhi
Ault / SL Power STK554U392A-E	Condor / SL Power STK554U392A-E	SL Power Electronics - Manufacturer of Condor / Au STK554U392A-E

### Ngā Hua e hāngai ana

<p><b>STK554U3A1A-E</b>                  Kaihanga: AMI Semiconductor / ON Semiconductor                  Whakaahuatanga: IC MOTOR DRIVER                  I roto i te taonga: 4295 pcs</p> <p><b>RFQ</b></p>	<p><b>STK554U362A-E</b>                  Kaihanga: AMI Semiconductor / ON Semiconductor                  Whakaahuatanga: IC BRIDGE DRIVER PAR 29SIP                  I roto i te taonga: 5549 pcs</p> <p><b>RFQ</b></p>
<p><b>STK554U361A-E</b>                  Kaihanga: AMI Semiconductor / ON Semiconductor                  Whakaahuatanga: IC MOTOR DRIVER                  I roto i te taonga: 5203 pcs</p> <p><b>RFQ</b></p>	<p><b>STK554U391A-E</b>                  Kaihanga: AMI Semiconductor / ON Semiconductor                  Whakaahuatanga: IC MOTOR DRIVER                  I roto i te taonga: 6726 pcs</p> <p><b>RFQ</b></p>
<p><b>STK554U362C-E</b>                  Kaihanga: AMI Semiconductor / ON Semiconductor                  Whakaahuatanga: IC BRIDGE DRIVER PAR 29SIP                  I roto i te taonga: 8541 pcs</p> <p><b>RFQ</b></p>	<p><b>STK554U392AGEVB</b>                  Kaihanga: AMI Semiconductor / ON Semiconductor                  Whakaahuatanga: EVAL KIT 3 PHASE HYBRID INVERTER                  I roto i te taonga: 799 pcs</p> <p><b>RFQ</b></p>
<p><b>STK57FU394AG-E</b>                  Kaihanga: AMI Semiconductor / ON Semiconductor                  Whakaahuatanga: 2-IN-1 PFC AND INVERTER IPM                  I roto i te taonga: 6147 pcs</p> <p><b>RFQ</b></p>	<p><b>STK554U394A-E</b>                  Kaihanga: AMI Semiconductor / ON Semiconductor                  Whakaahuatanga: IC MOTOR DRIVER                  I roto i te taonga: 6326 pcs</p> <p><b>RFQ</b></p>
<p><b>STK57FU394A-E</b>                  Kaihanga: AMI Semiconductor / ON Semiconductor                  Whakaahuatanga: MOD IPM PFC INVERTER                  I roto i te taonga: 2734 pcs</p> <p><b>RFQ</b></p>	<p><b>STK554U362AGEVB</b>                  Kaihanga: AMI Semiconductor / ON Semiconductor                  Whakaahuatanga: EVAL KIT 3 PHASE HYBRID INVERTER                  I roto i te taonga: 860 pcs</p> <p><b>RFQ</b></p>
<p><b>STK57FU391A-E</b>                  Kaihanga: AMI Semiconductor / ON Semiconductor                  Whakaahuatanga: IC MOTOR DRIVER 35SIP                  I roto i te taonga: 5656 pcs</p> <p><b>RFQ</b></p>	<p><b>STK554U364A-E</b>                  Kaihanga: AMI Semiconductor / ON Semiconductor                  Whakaahuatanga: IC MOTOR DRIVER                  I roto i te taonga: 5187 pcs</p> <p><b>RFQ</b></p>

