

TOSHIBA
Leading Innovation >>>

Toshiba Semiconductor and Storage

TC7SBL384CFU,LF

Tau Wae:

Kaihanga / Waitohu:

Whakaahuatanga hua

Ngā Rauemi:

RoHS Tūnga

Waehere Stock

Tuhinga mai i

Te Ara Tuhi

TC7SBL384CFU,LF

Toshiba Semiconductor and Storage

IC SWITCH SPST 18 OHM USV

TC7SBL384CFU,LF.pdf

Whakahaerehia te kore utu / RoHS

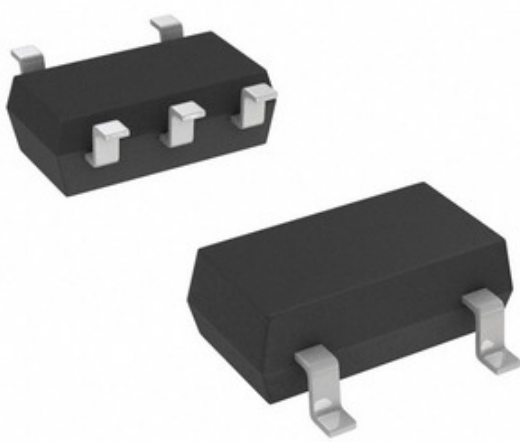
175387 pcs stock

Hong Kong

DHL/Fedex/TNT/UPS/EMS

TONO MO TE WHAKAHUA

Storage



Ko te whakaahua he tohu. Tirohia nga korero mo nga taipitopito hua.

Ngā whakaaturanga o TC7SBL384CFU,LF

TAU WAE	TC7SBL384CFU,LF
KAIHANGA	Toshiba Semiconductor and Storage
WHAKAAHUATANGA	IC SWITCH SPST 18 OHM USV
WHAKAHAERE TOKO WHAKAHAERE / ROHS TŪNGA	Whakahaerehia te kore utu / RoHS
HE RAHINGA KEI TE WĀTEA	175387 pcs
PEPA RARAUNGA	TC7SBL384CFU,LF.pdf
NGAOHIHI - WHAKAAETANGA, KOTAHI (V +)	1.65 V ~ 3.6 V
NGAOHIHI - WHAKAAETANGA, TINO (V ±)	-
WHAKAWHITI TIME (TON, TOFF) (MAX)	6ns, 6ns
WHAKAWHITIHIA TE KOTAHITANGA	SPST - NO
PŪRERE PŪRERE WHAKARATO	USV
RAUPAPA	-
PACKAGING	Cut Tape (CT)
PAA / CASE	5-TSSOP, SC-70-5, SOT-353
ĒTAHI INGOA	TC7SBL384CFULFCT
TAE MAHI	-40°C ~ 85°C (TA)
WHAKAOHO-A-WHENUA (MAX)	18 Ohm
TUHINGA O MUA	1
MAHAHIKO MAHA / WHAKAWHANUI WHAKAWHITI	1:1
TAUMATA WHAKAARO MOE (MSL)	1 (Unlimited)
WHAKAHAERE TOKO WHAKAHAERE / ROHS TŪNGA	Lead free / RoHS Compliant
WHAKAAHUATANGA TAIPITOPITO	1 Circuit IC Switch 1:1 18 Ohm USV
I TEIE NEI - NGA RERENGA (IS (ATU)) (MAX)	1µA
CROSSTALK	-
TOHA TAE	-
TAUTUHINGA CHANNEL-KI-CHANNEL (ΔRON)	-
KO TE KAHA O TE CHANNEL (CS (ATU)), CD (ATU))	3.5pF
-3DB WHAIWHATA	-

Ngā tūtohu e hāngai ana

Toshiba Semiconductor and Storage TC7SBL384CFU,LF	TC7SBL384CFU,LF Kaihiwhi	TC7SBL384CFU,LF Kaiwhakarato
TC7SBL384CFU,LF Utu	TC7SBL384CFU,LF Pikitia	TC7SBL384CFU,LF Whakaahua
TC7SBL384CFU,LF PDF Datasheet	TC7SBL384CFU,LF Download Datasheet	Tuhinga TC7SBL384CFU,LF
TC7SBL384CFU,LF Stock	Hokona TC7SBL384CFU,LF	Hokona Toshiba Semiconductor and Storage TC7SBL384CFU,LF
Toshiba Semiconductor and Storage TC7SBL384CFU,LF	Toshiba Semiconductor and Storage Kaiwhakarato	Toshiba Semiconductor and Storage Kaihiwhi
Toshiba Semiconductor and Storage TC7SBL384CFU,LF	Toshiba TC7SBL384CFU,LF	

Ngā Hua e hāngai ana

<p>TC7SET02FU,LJ(CT) Kaihanga: Toshiba Semiconductor and Storage Whakaahuatanga: IC GATE NOR 1CH 2-INP USV I roto i te taonga: 220103 pcs RFQ</p>	<p>TC7SB66CFU,LF Kaihanga: Toshiba Semiconductor and Storage Whakaahuatanga: IC SWITCH SPST 7 OHM USV I roto i te taonga: 210194 pcs RFQ</p>
<p>TC7SB3157CFU,LF Kaihanga: Toshiba Semiconductor and Storage Whakaahuatanga: IC MUX/DEMUX SGL 1:2 US6 I roto i te taonga: 1238944 pcs RFQ</p>	<p>TC7SBL66CFU,LF Kaihanga: Toshiba Semiconductor and Storage Whakaahuatanga: IC SWITCH SPST 18 OHM USV I roto i te taonga: 196221 pcs RFQ</p>
<p>TC7S66F,LF Kaihanga: Toshiba Semiconductor and Storage Whakaahuatanga: IC GATE SMV L-MOS I roto i te taonga: 1036964 pcs RFQ</p>	<p>TC7S86FUT5LFT Kaihanga: Toshiba Semiconductor and Storage Whakaahuatanga: IC GATE XOR 1CH 2-INP USV I roto i te taonga: 4124 pcs RFQ</p>
<p>TC7S66FU,LF Kaihanga: Toshiba Semiconductor and Storage Whakaahuatanga: IC GATE USV L-MOS SMV I roto i te taonga: 1321175 pcs RFQ</p>	<p>TC7SET00F,LJ(CT) Kaihanga: Toshiba Semiconductor and Storage Whakaahuatanga: IC GATE NAND 1CH 2-INP SMV I roto i te taonga: 1421803 pcs RFQ</p>
<p>TC7SET00FU,LJ(CT) Kaihanga: Toshiba Semiconductor and Storage Whakaahuatanga: IC GATE NAND 1CH 2-INP USV I roto i te taonga: 186276 pcs RFQ</p>	<p>TC7SET04F(TE85L,JF) Kaihanga: Toshiba Semiconductor and Storage Whakaahuatanga: IC INVERTER 1CH 1-INP SMV I roto i te taonga: 3753 pcs RFQ</p>
<p>TC7SB67CFU,LF Kaihanga: Toshiba Semiconductor and Storage Whakaahuatanga: IC SWITCH SPST 7 OHM USV I roto i te taonga: 6748 pcs RFQ</p>	<p>TC7SET02F,LJ(CT) Kaihanga: Toshiba Semiconductor and Storage Whakaahuatanga: IC GATE NOR 1CH 2-INP SMV I roto i te taonga: 1173114 pcs RFQ</p>