

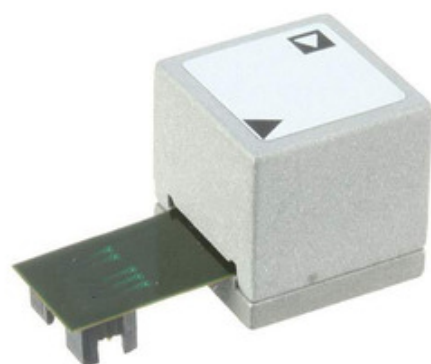


ADI (Analog Devices, Inc.)

ADIS16223CMLZ

Tau Wae:
Kaihanga / Waitohu:
Whakaahuatanga hua
Ngā Rauemi:
RoHs Tūnga
Waehe Stock
Tuhinga mai i
Te Ara Tuhi

ADIS16223CMLZ
ADI (Analog Devices, Inc.)
SENSOR VIBRATION -70+70G MODUL
 ADIS16223CMLZ.pdf
 Whakahaerehia te kore utu / RoHS
421 pcs stock
Hong Kong
DHL/Fedex/TNT/UPS/EMS



TONO MO TE WHAKAHUA

Ko te whakaahua he tohu. Tirohia nga korero mo nga taipitopito hua.

Ngā whakaaturanga o ADIS16223CMLZ

TAU WAE	ADIS16223CMLZ
KAIHANGA	ADI (Analog Devices, Inc.)
WHAKAAHUATANGA	SENSOR VIBRATION -70+70G MODUL
WHAKAHAERE TOKO WHAKAHAERE / ROHS TŪNGA	Whakahaerehia te kore utu / RoHS
HE RAHINGA KEI TE WĀTEA	421 pcs
PEPA RARAUNGA	ADIS16223CMLZ.pdf
WHAKAMUTUNGA	Rectangular Connector - 14 Pos
RAUPAPA	iMEMS®, iSensor™
MOMO PATO	Vibration, Acceleration
WHAKAAROARO	4.768mg/LSB
WAAHI WHAKAARO	-70 ~ 70 g
MANA - KA TOHUA	3.15 V ~ 3.6 V / 43mA
PAA / CASE	14-Module with Connector
MOMO PUTANGA	Digital
TAE MAHI	-40°C ~ 125°C
MOMO TAE	Screw Mount
TAUMATA WHAKAARO MOE (MSL)	1 (Unlimited)
WHAKAHAERE TOKO WHAKAHAERE / ROHS TŪNGA	Lead free / RoHS Compliant
NGĀ ĀHUATANGA	Programmable
WHAKAAHUATANGA TAIPITOPITO	Vibration, Acceleration Sensor Digital Screw Mount Rectangular Connector - 14 Pos
TAU WAE TUAKIRI	ADIS16223

Ngā tūtohu e hāngai ana

ADI (Analog Devices, Inc.) ADIS16223CMLZ	ADIS16223CMLZ Kaiwhiwhi	ADIS16223CMLZ Kaiwhakarato
ADIS16223CMLZ Utu	ADIS16223CMLZ Pikitia	ADIS16223CMLZ Whakaahua
ADIS16223CMLZ PDF Datasheet	ADIS16223CMLZ Download Datasheet	Tuhinga ADIS16223CMLZ
ADIS16223CMLZ Stock	Hokona ADIS16223CMLZ	Hokona ADI (Analog Devices, Inc.) ADIS16223CMLZ
ADI (Analog Devices, Inc.) ADIS16223CMLZ	ADI (Analog Devices, Inc.) Kaiwhakarato	ADI (Analog Devices, Inc.) Kaiwhiwhi
ADI (Analog Devices, Inc.) ADIS16223CMLZ	AD ADIS16223CMLZ	ADI (Analog Devices, Inc.) ADIS16223CMLZ
Analog Devices Inc. ADIS16223CMLZ	Analog Devices, Inc. ADIS16223CMLZ	

Ngā Hua e hāngai ana

<p>ADIS16228CMLZ Kaihanga: ADI (Analog Devices, Inc.) Whakaahuatanga: IC SENSOR DIGITAL TRI VIB 15-MOD I roto i te taonga: 330 pcs</p> <p>RFQ</p>	<p>ADIS16223/PCBZ Kaihanga: ADI (Analog Devices, Inc.) Whakaahuatanga: BOARD EVAL FOR ADIS16223 I roto i te taonga: 6745 pcs</p> <p>RFQ</p>
<p>ADIS16227CMLZ Kaihanga: ADI (Analog Devices, Inc.) Whakaahuatanga: SENSOR VIBRATION -70+70G MODUL I roto i te taonga: 281 pcs</p> <p>RFQ</p>	<p>ADIS16240/PCBZ Kaihanga: ADI (Analog Devices, Inc.) Whakaahuatanga: BOARD EVAL FOR ADIS16240 I roto i te taonga: 3205 pcs</p> <p>RFQ</p>
<p>ADIS16210/PCBZ Kaihanga: ADI (Analog Devices, Inc.) Whakaahuatanga: BOARD EVAL FOR ADIS16210 I roto i te taonga: 3798 pcs</p> <p>RFQ</p>	<p>ADIS16229AMLZ Kaihanga: ADI (Analog Devices, Inc.) Whakaahuatanga: SENSOR VIBRATION W/RF TXRX I roto i te taonga: 254 pcs</p> <p>RFQ</p>
<p>ADIS16210CMLZ Kaihanga: ADI (Analog Devices, Inc.) Whakaahuatanga: IMU ACCEL/INCLINE SPI 15ML I roto i te taonga: 601 pcs</p> <p>RFQ</p>	<p>ADIS16228/PCBZ Kaihanga: ADI (Analog Devices, Inc.) Whakaahuatanga: BOARD EVAL ADIS16228 I roto i te taonga: 4777 pcs</p> <p>RFQ</p>
<p>ADIS16227/PCBZ Kaihanga: ADI (Analog Devices, Inc.) Whakaahuatanga: EVAL BOARD FOR ADIS16227 I roto i te taonga: 6574 pcs</p> <p>RFQ</p>	<p>ADIS16209CCCZ Kaihanga: ADI (Analog Devices, Inc.) Whakaahuatanga: IMU ACCEL/INCLINE SPI 16LGA I roto i te taonga: 1235 pcs</p> <p>RFQ</p>
<p>ADIS16220CCCZ Kaihanga: ADI (Analog Devices, Inc.) Whakaahuatanga: ACCELEROMETER 70G SPI 16LGA I roto i te taonga: 5761 pcs</p> <p>RFQ</p>	<p>ADIS16220/PCBZ Kaihanga: ADI (Analog Devices, Inc.) Whakaahuatanga: BOARD EVAL FOR ADIS16220 I roto i te taonga: 3121 pcs</p> <p>RFQ</p>