

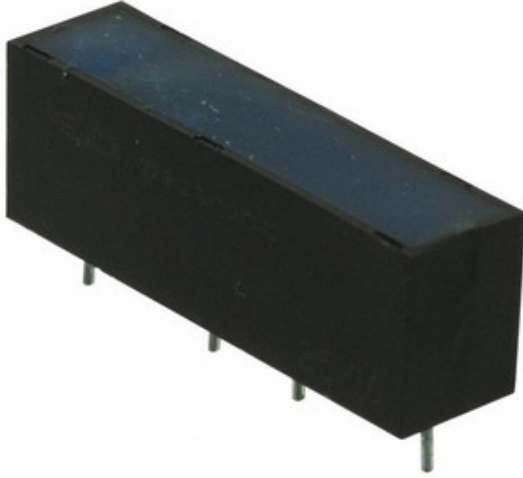


Standex-Meder Electronics

SIL12-1A72-71D

Tau Wae:
 Kaihanga / Waitohu:
 Whakaahuatanga hua
 Ngā Rauemi:
 RoHS Tūnga
 Waehere Stock
 Tuhinga mai i
 Te Ara Tuhi

SIL12-1A72-71D
 Standex-Meder Electronics
 RELAY REED SPST 0.5A 12V
 SIL12-1A72-71D.pdf
 Whakahaerehia te kore utu / RoHS
 26632 pcs stock
 Hong Kong
 DHL/Fedex/TNT/UPS/EMS



Ko te whakaahua he tohu. Tirohia nga korero mo nga taipitopito hua.

TONO MO TE WHAKAHUA

Ngā whakaaturanga o SIL12-1A72-71D

TAU WAE	SIL12-1A72-71D
KAIHANGA	Standex-Meder Electronics
WHAKAAHUATANGA	RELAY REED SPST 0.5A 12V
WHAKAHAERE TOKO WHAKAHAERE / ROHS TŪNGA	Whakahaerehia te kore utu / RoHS
HE RAHINGA KEI TE WĀTEA	26632 pcs
PEPA RARAUNGA	SIL12-1A72-71D.pdf
TAHURI I TE NGAOHIHI (MAX)	8.4 VDC
WHAKAKOREHIA TE NGAOHIHI (MIN)	1.8 VDC
KĀHUA WHAKAMUTUNGA	PC Pin
WHAKAOHO WHAKAWHITI	200VAC, 200VDC - Max
RAUPAPA	SIL
WĀ WHAKAORA	0.1ms
PACKAGING	Tube
ĒTAHI INGOA	3312100171 374-1249 SIL121A7271D
TAE MAHI	-20°C ~ 70°C
WHAKAMAHIA TE WA	0.7ms
MOMO TAE	Through Hole
TAUMATA WHAKAARO MOE (MSL)	1 (Unlimited)
WHAKAHAERE TOKO WHAKAHAERE / ROHS TŪNGA	Lead free / RoHS Compliant
NGĀ ĀHUATANGA	Diode
WHAKAAETANGA WHAKATAURANGA (ANEI)	500mA
WHAKAAETANGA MEA	-
PUKA PUKA WHAKAPĀ	SPST-NO (1 Form A)
KOHIKOHI NGAOHIKO	12VDC
MOMO MOMO	Non Latching
KO TE WHAKAAETANGA MIIHINI	1 kOhms
KOHIKOHI MIIHINI	145 mW
KOHIKOHI KEI TE AUKATI	12.0mA

Ngā tūtohu e hāngai ana

Standex-Meder Electronics SIL12-1A72-71D	SIL12-1A72-71D Kaiwhiwhi	SIL12-1A72-71D Kaiwhakarato
SIL12-1A72-71D Utu	SIL12-1A72-71D Pikitia	SIL12-1A72-71D Whakaahua
SIL12-1A72-71D PDF Datasheet	SIL12-1A72-71D Download Datasheet	Tuhinga SIL12-1A72-71D
SIL12-1A72-71D Stock	Hokona SIL12-1A72-71D	Hokona Standex-Meder Electronics SIL12-1A72-71D
Standex-Meder Electronics SIL12-1A72-71D	Standex-Meder Electronics Kaiwhakarato	Standex-Meder Electronics Kaiwhiwhi
Standex-Meder Electronics SIL12-1A72-71D	Meder Electronic SIL12-1A72-71D	

Ngā Hua e hāngai ana

<p>SIL10E224J Kaihanga: AMP Connectors / TE Connectivity Whakaahuatanga: RES ARRAY 9 RES 220K OHM 10SIP I roto i te taonga: 572079 pcs</p> <p>RFQ</p>	<p>SIL10E223J Kaihanga: AMP Connectors / TE Connectivity Whakaahuatanga: RES ARRAY 9 RES 22K OHM 10SIP I roto i te taonga: 629866 pcs</p> <p>RFQ</p>
<p>SIL15C-05SADJ-V Kaihanga: Astec America (Artesyn Embedded Technologies) Whakaahuatanga: DC DC CONVERTER 0.9-3.3V 50W I roto i te taonga: 6626 pcs</p> <p>RFQ</p>	<p>SIL10M183G Kaihanga: AMP Connectors / TE Connectivity Whakaahuatanga: RES ARRAY 5 RES 18K OHM 10SIP I roto i te taonga: 438749 pcs</p> <p>RFQ</p>
<p>SIL12-1A72-71L Kaihanga: Standex-Meder Electronics Whakaahuatanga: RELAY REED SPST 0.5A 12V I roto i te taonga: 18751 pcs</p> <p>RFQ</p>	<p>SIL10M472J Kaihanga: AMP Connectors / TE Connectivity Whakaahuatanga: RES ARRAY 5 RES 4.7K OHM 10SIP I roto i te taonga: 704422 pcs</p> <p>RFQ</p>
<p>SIL15C-05SADJ-VJ Kaihanga: Astec America (Artesyn Embedded Technologies) Whakaahuatanga: DC DC CONVERTER 0.9-3.3V 50W I roto i te taonga: 3994 pcs</p> <p>RFQ</p>	<p>SIL10E152J Kaihanga: AMP Connectors / TE Connectivity Whakaahuatanga: RES ARRAY 9 RES 1.5K OHM 10SIP I roto i te taonga: 633492 pcs</p> <p>RFQ</p>
<p>SIL12M222J Kaihanga: AMP Connectors / TE Connectivity Whakaahuatanga: RES ARRAY 6 RES 2.2K OHM 12SIP I roto i te taonga: 491805 pcs</p> <p>RFQ</p>	<p>SIL12-1A31-71M Kaihanga: Standex-Meder Electronics Whakaahuatanga: RELAY REED SPST 2A 12V I roto i te taonga: 2851 pcs</p> <p>RFQ</p>
<p>SIL12-1A85-76D3K Kaihanga: Standex-Meder Electronics Whakaahuatanga: RELAY REED SPST 1A 12V I roto i te taonga: 4416 pcs</p> <p>RFQ</p>	<p>SIL15C-05SADJ-H Kaihanga: Astec America (Artesyn Embedded Technologies) Whakaahuatanga: DC DC CONVERTER 0.9-3.3V 50W I roto i te taonga: 5305 pcs</p> <p>RFQ</p>